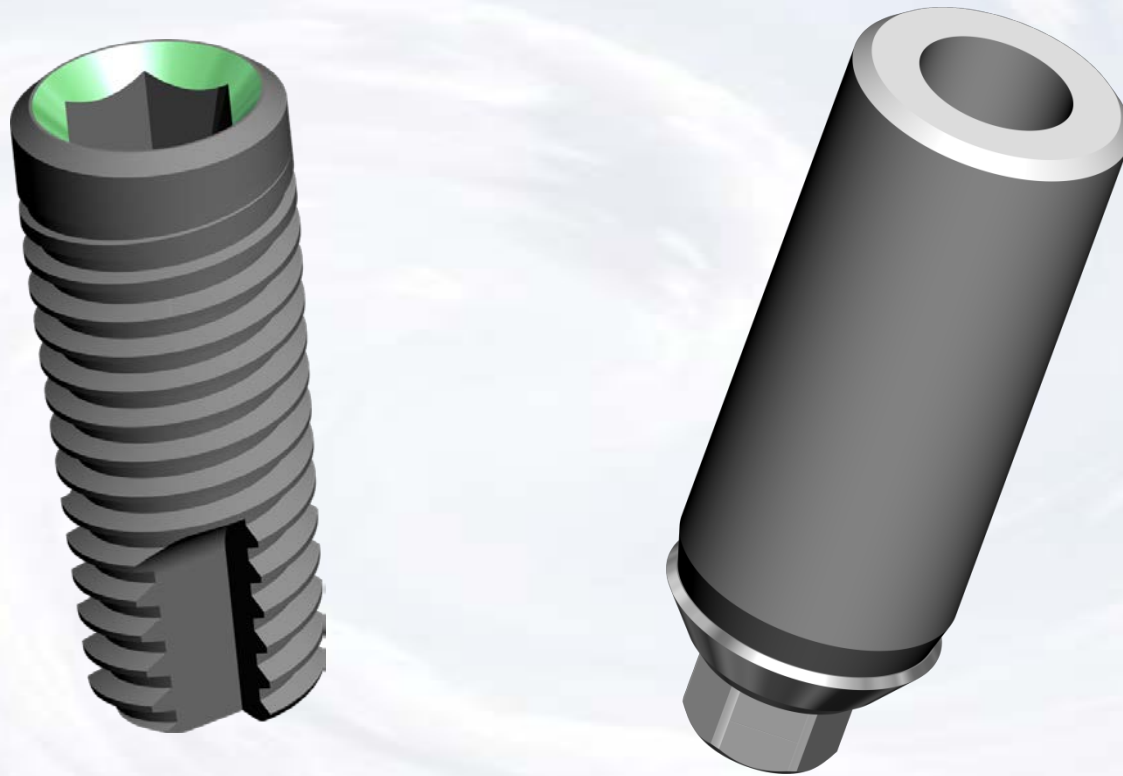


Internal Hex UCLA Screw Retained Crown



Blue Sky Bio

Internal Hex UCLA Screw Retained Crown




Healing abutment in place

The presentation that follows lists only one combination of parts
Obviously the clinical situation may call for substitution of another part on this slide



Blue Sky Bio

Internal Hex UCLA Screw Retained Crown

|  | Size | Part # |
|--|------------------------|-----------|
| | .050 Hex Driver Short | SDS050 |
| | .050 Hex Driver Long | SDL050 |
| | Torque/Ratchet Wrench | TR-900-01 |
| | Thumb Knob for Drivers | TK |

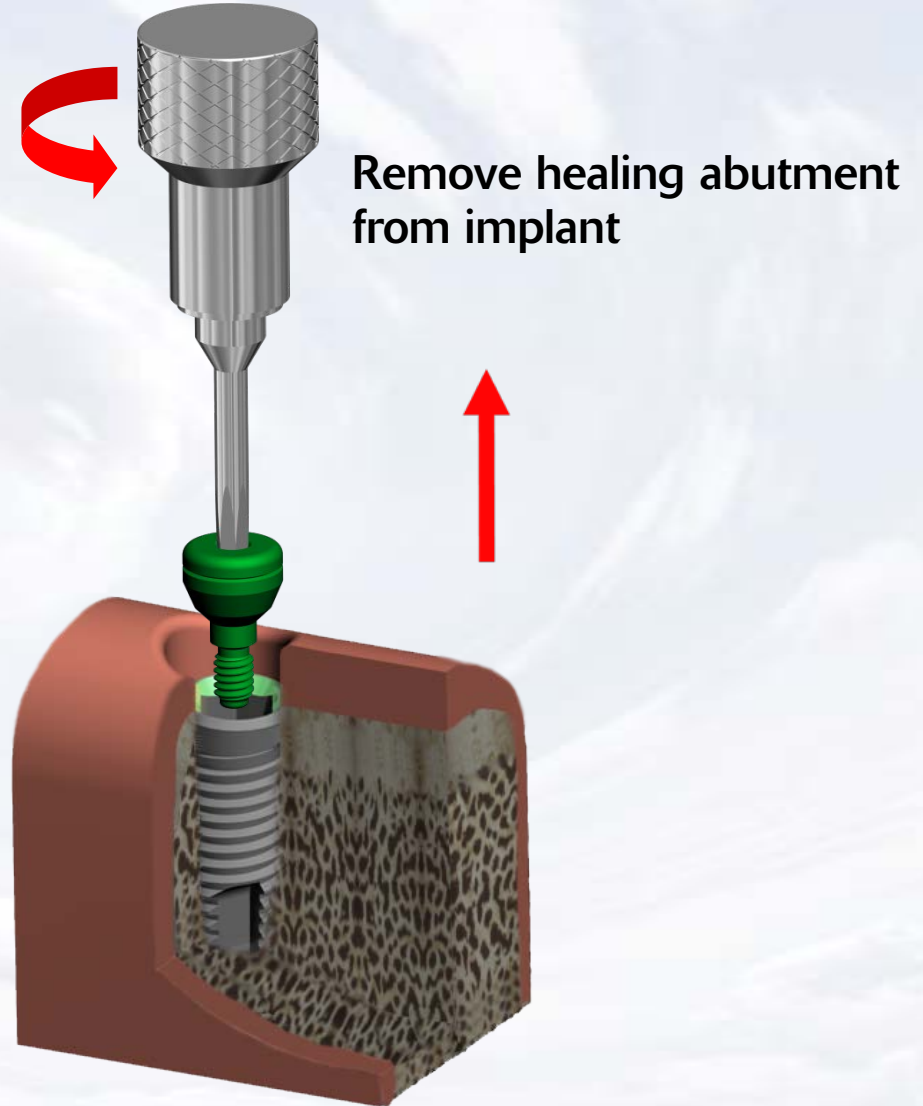
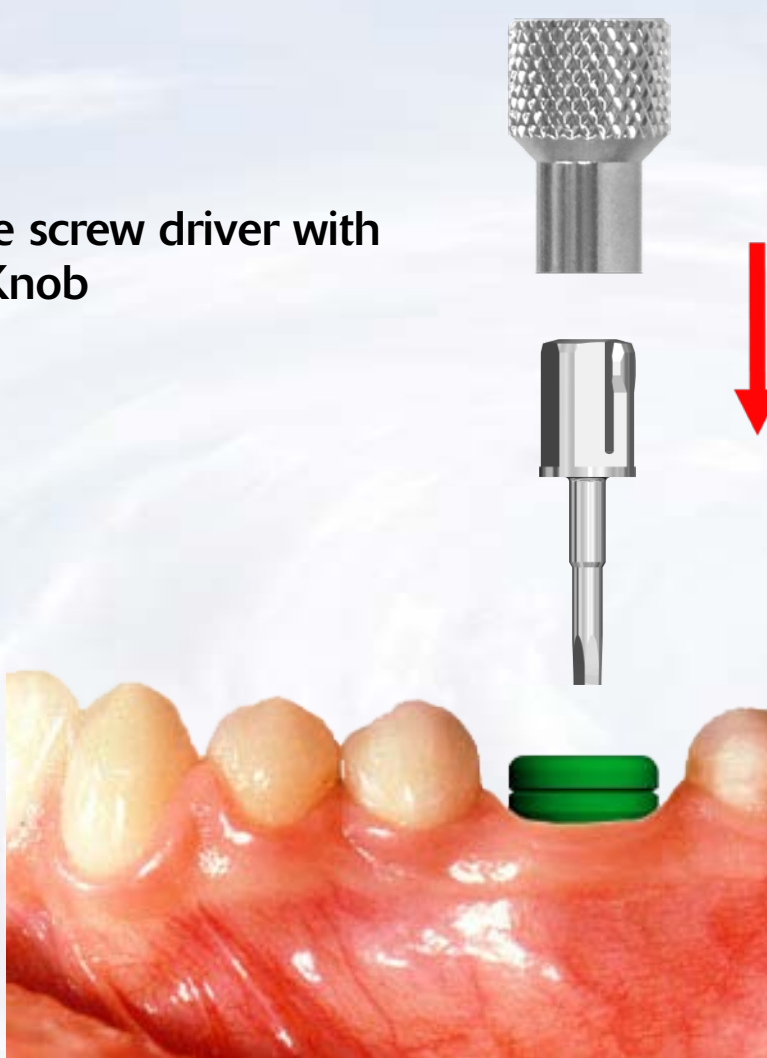
Prosthetic instruments needed



Blue Sky Bio

Internal Hex UCLA Screw Retained Crown

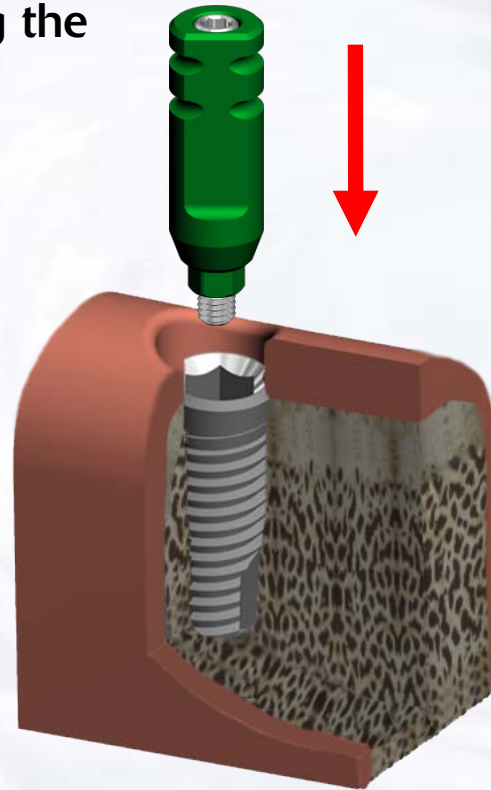
Assemble screw driver with
Thumb Knob



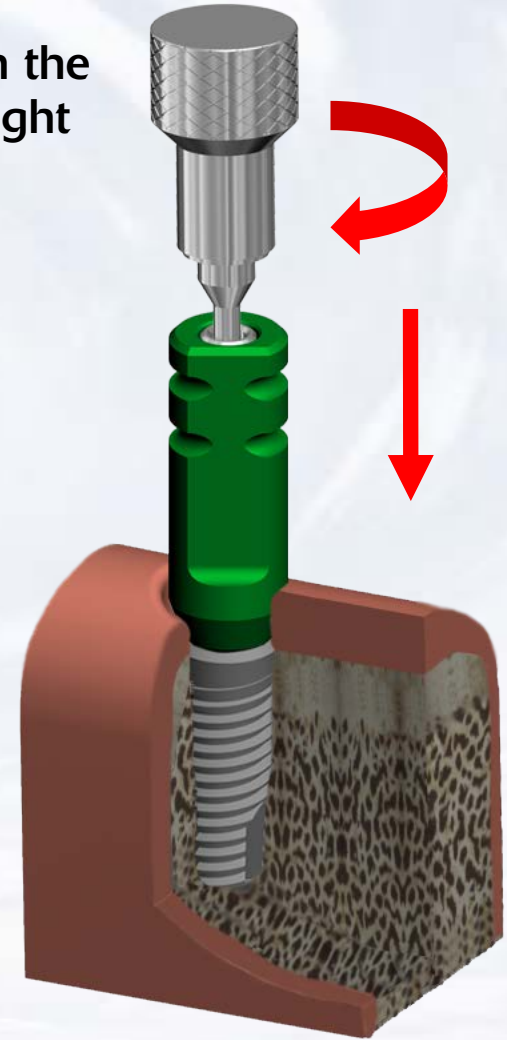
Blue Sky Bio

Internal Hex UCLA Screw Retained Crown

Insert the Impression Transfer into the implant ensuring the appropriate orientation

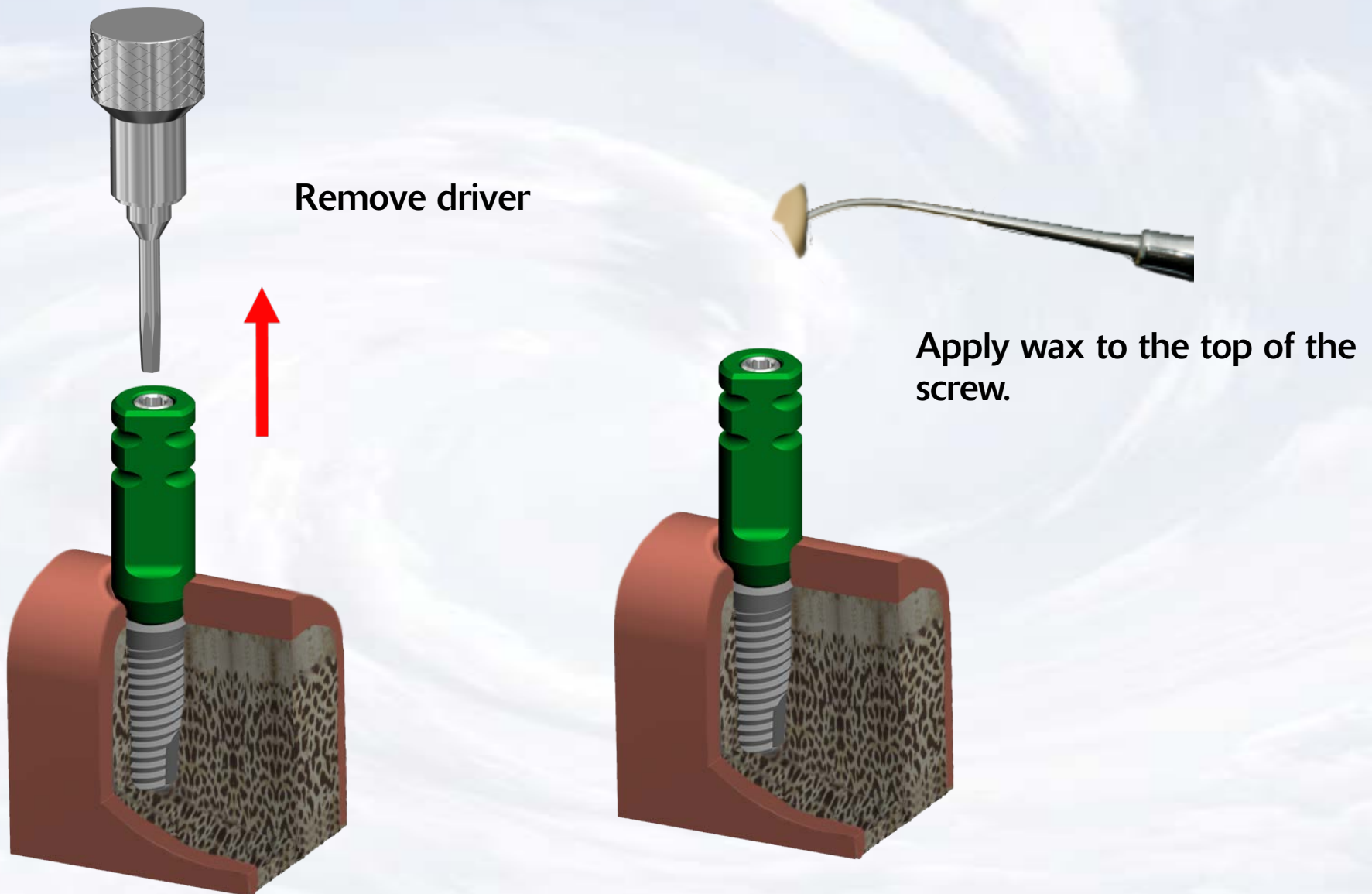


Tighten the screw with the driver assembly with light finger force



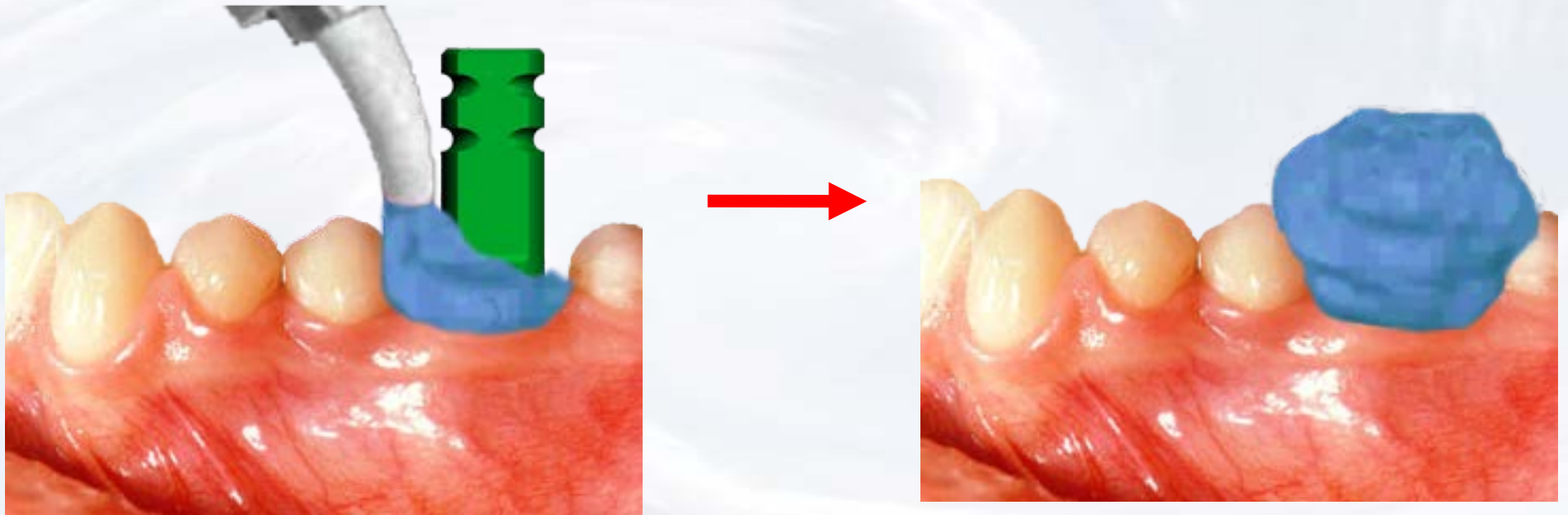
Blue Sky Bio

Internal Hex UCLA Screw Retained Crown



Blue Sky Bio

Internal Hex UCLA Screw Retained Crown

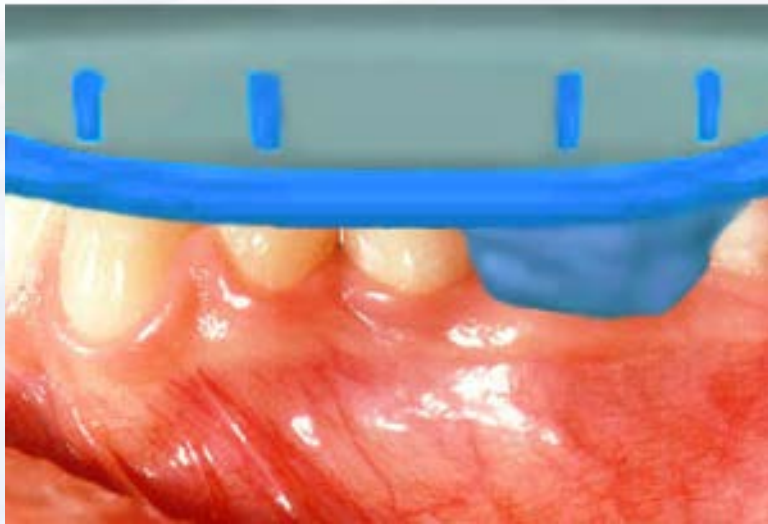


Inject impression material around the abutment

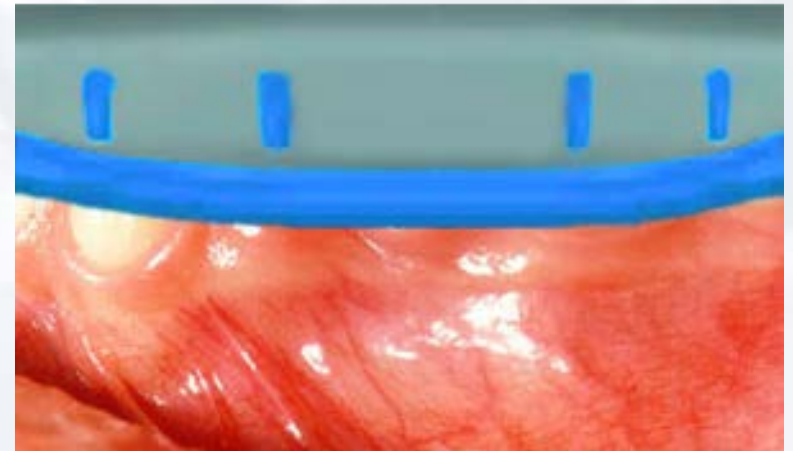


Blue Sky Bio

Internal Hex UCLA Screw Retained Crown



Insert tray with impression material

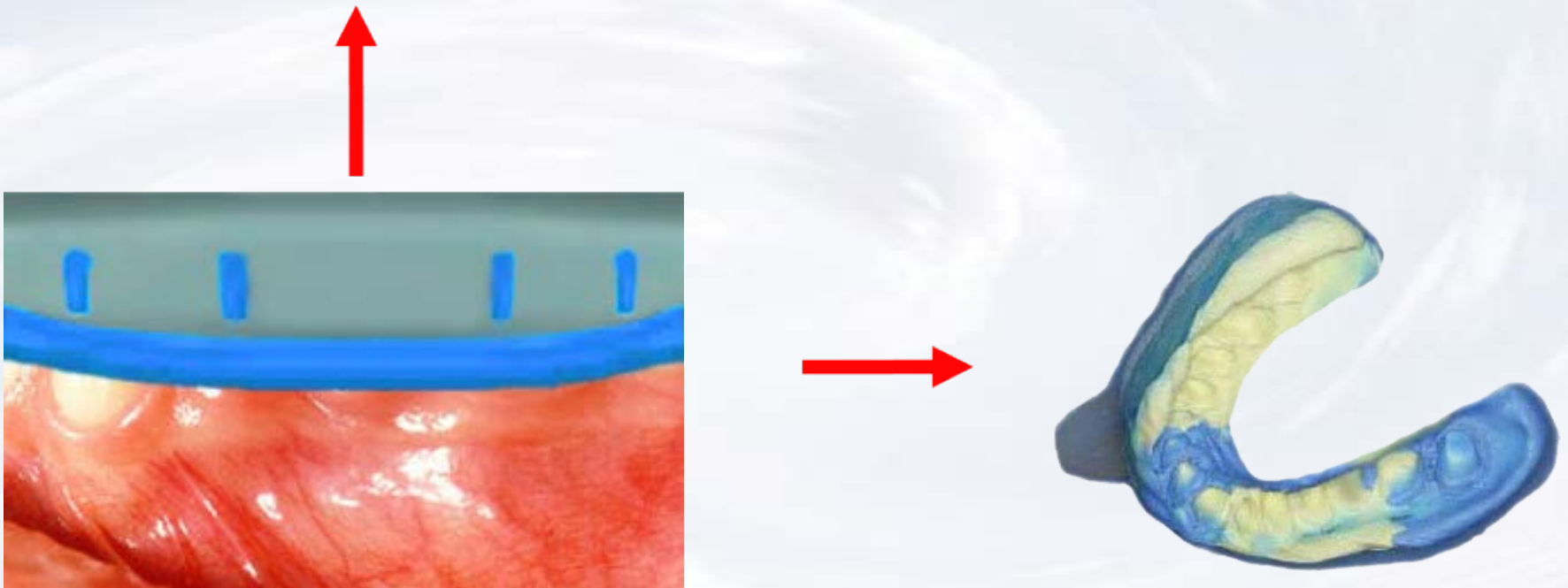


Seat impression to capture dental arch



Blue Sky Bio

Internal Hex UCLA Screw Retained Crown



Remove the impression from the mouth when material has set

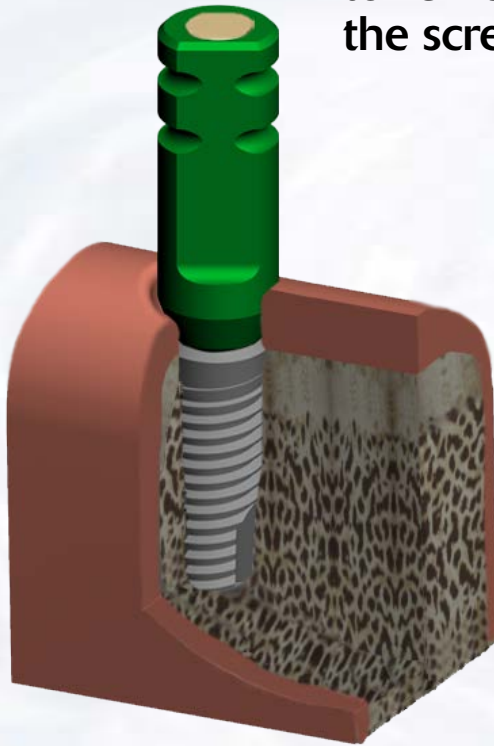


Blue Sky Bio

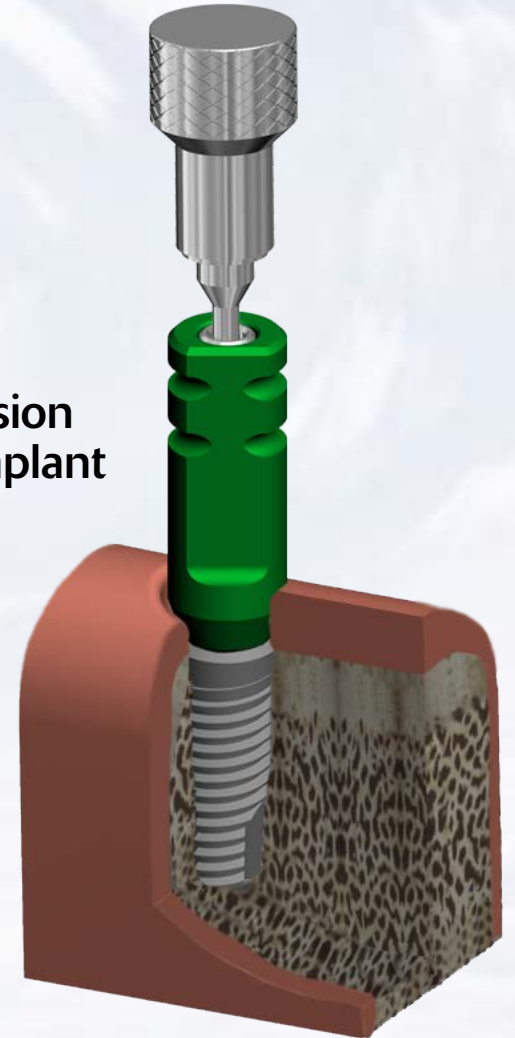
Internal Hex UCLA Screw Retained Crown



Use a sharp instrument
to remove the wax from
the screw

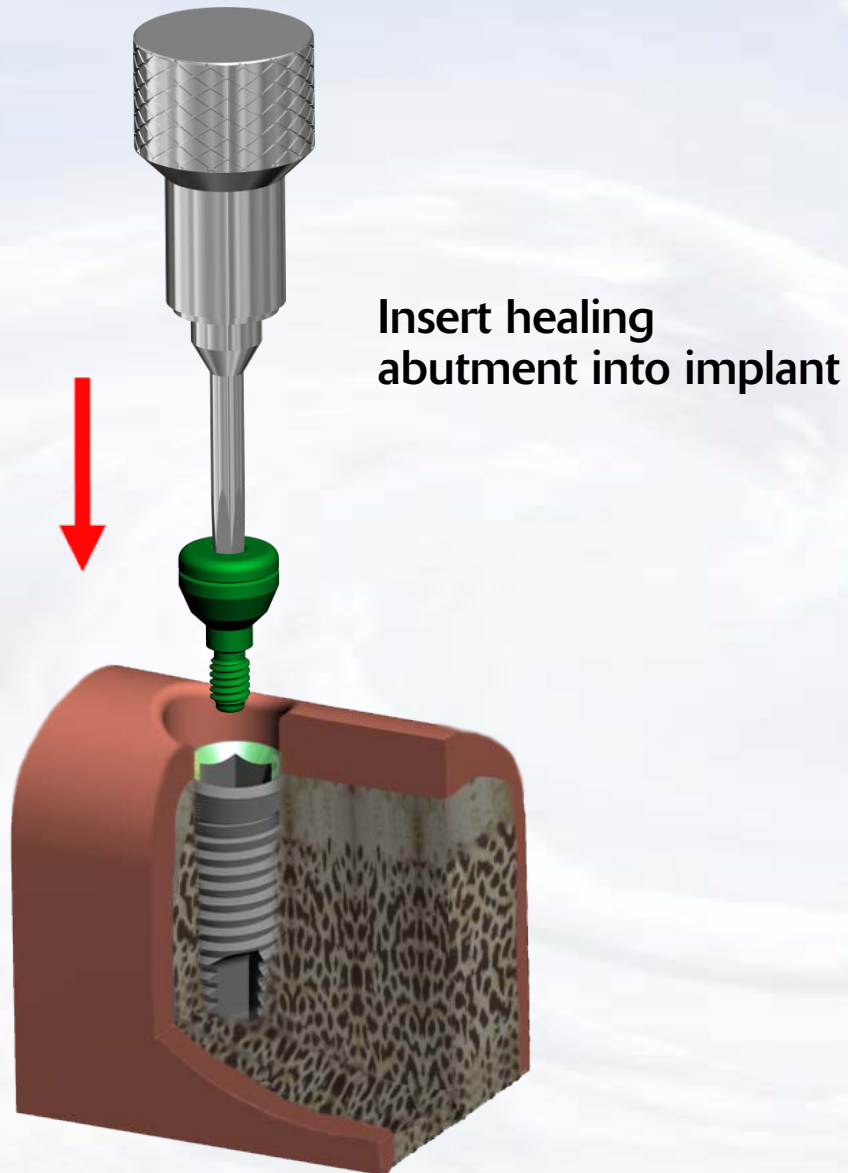


Remove impression
transfer from implant



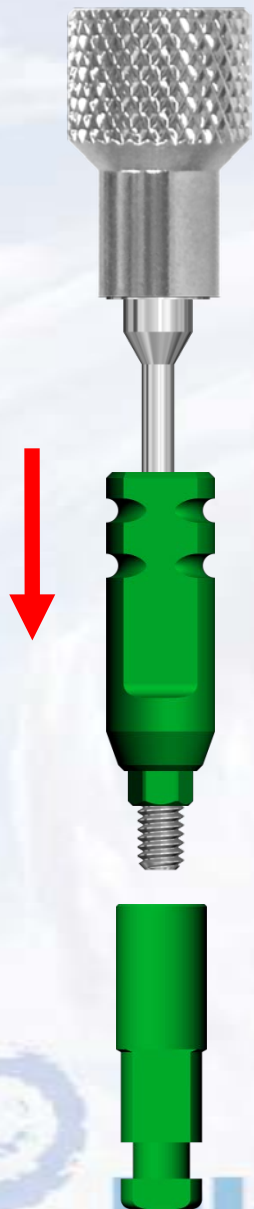
Blue Sky Bio

Internal Hex UCLA Screw Retained Crown

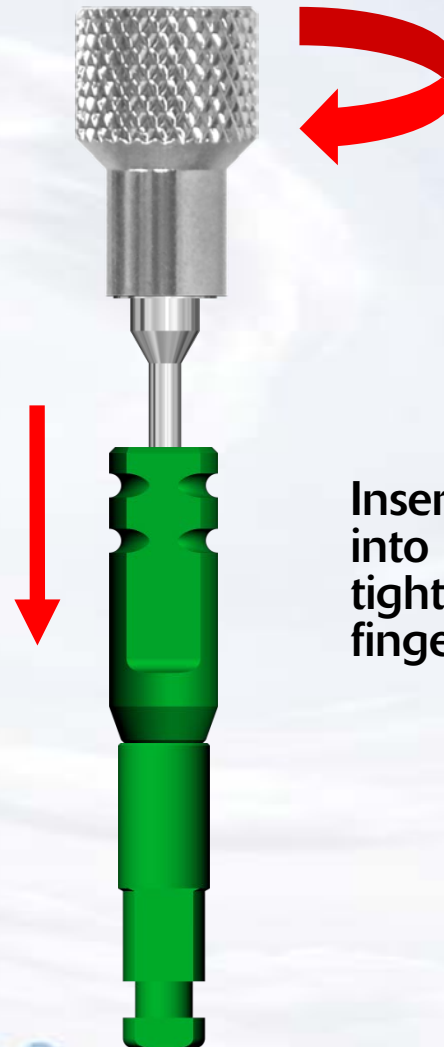


Blue Sky Bio

Internal Hex UCLA Screw Retained Crown



Insert driver into
Impression Transfer

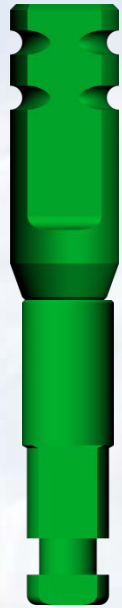


Insert Impression Transfer
into implant level analog and
tighten fixation screw with
finger pressure



Blue Sky Bio

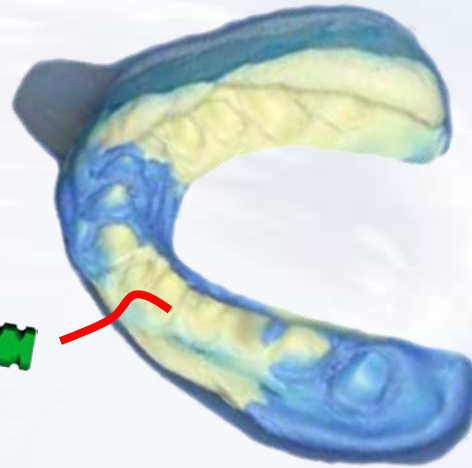
Internal Hex UCLA Screw Retained Crown



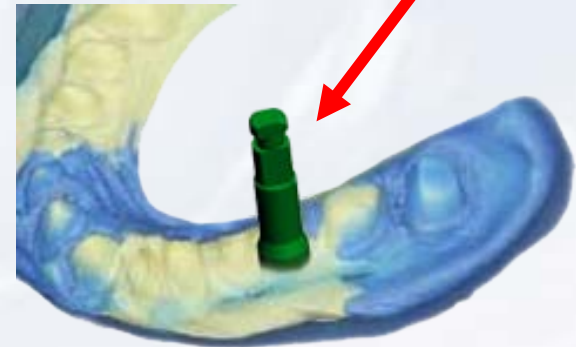
Assembled Impression
Transfer with implant
level analog



Insert transfer/analog
assembly into impression



UCLA Abutment/Analog
assembly inside impression



Blue Sky Bio

Internal Hex UCLA Screw Retained Crown

Apply soft tissue replica material
around implant level analog



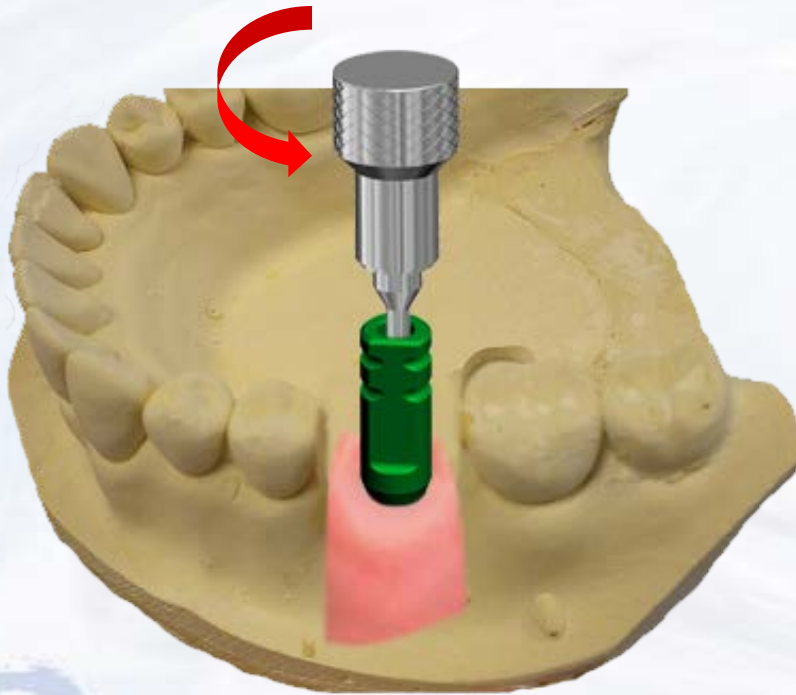
Pour dental stone into impression



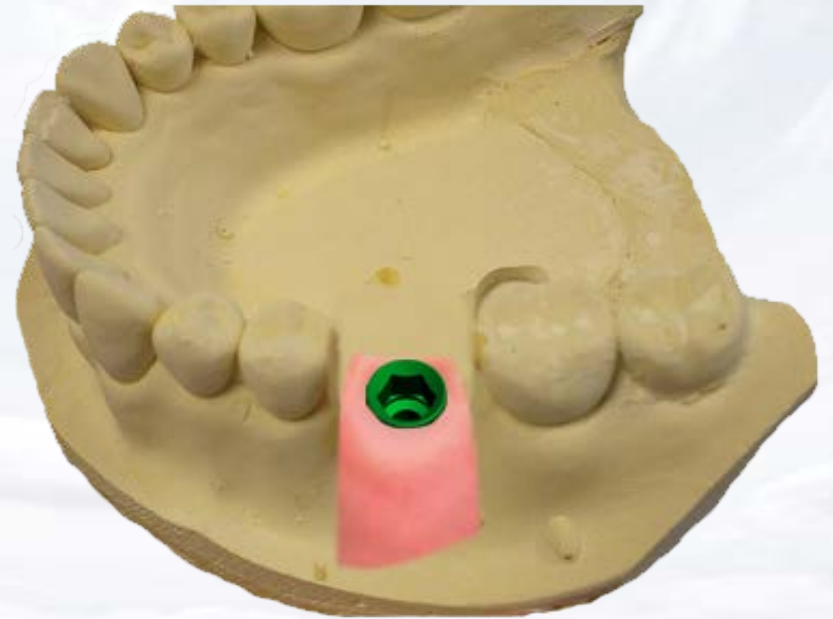
Blue Sky Bio

Internal Hex UCLA Screw Retained Crown

Remove model from impression and loosen the fixation screw of the impression transfer by turning screw driver counter clockwise



Remove impression transfer from analog

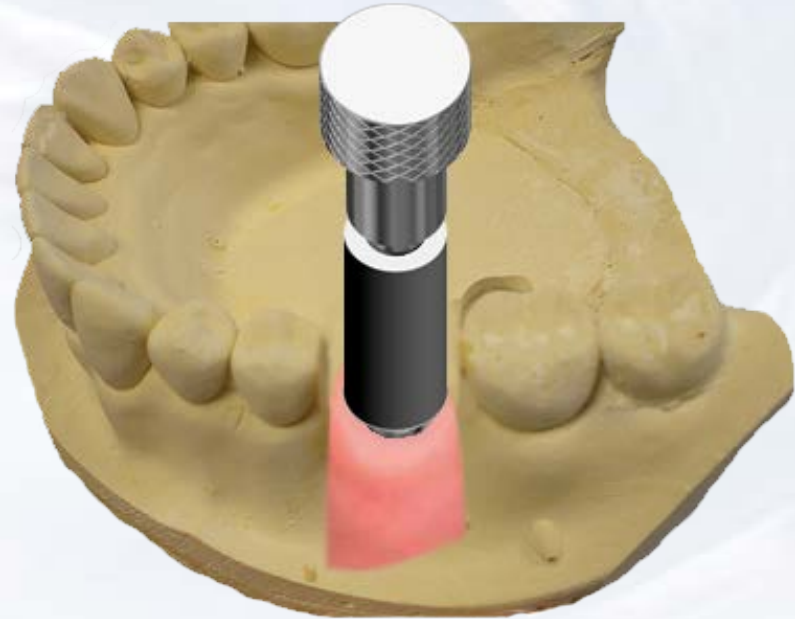


Blue Sky Bio

Internal Hex UCLA Screw Retained Crown



Insert screw driver assembly into fixation screw in the UCLA abutment



Insert the UCLA abutment into the implant level analog ensuring the appropriate orientation. Hand tighten the fixation screw within the UCLA abutment



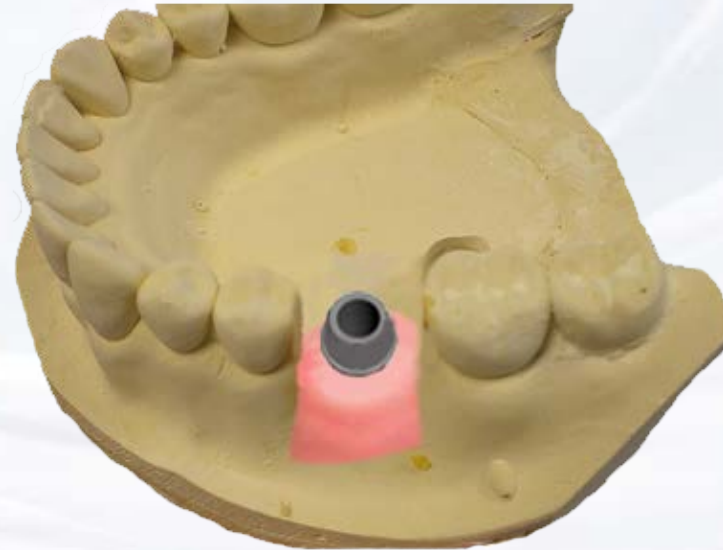
Blue Sky Bio

Internal Hex UCLA Screw Retained Crown

Create a wax up of the desired shape of the abutment by subtracting or adding to the resin of the UCLA abutment



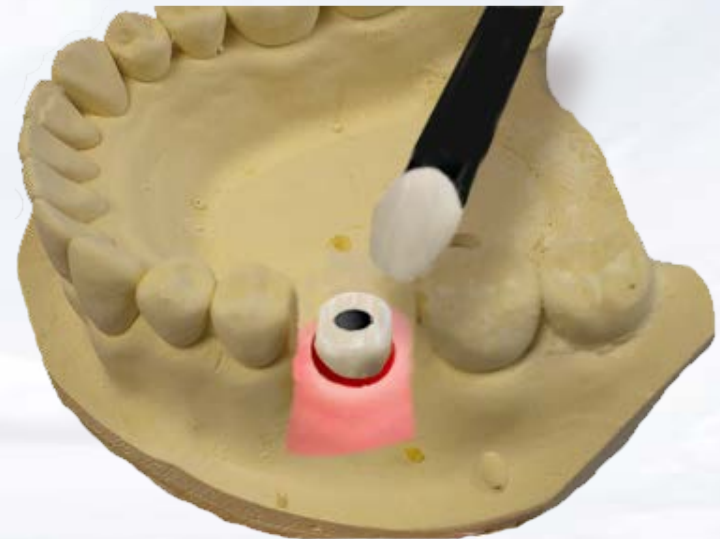
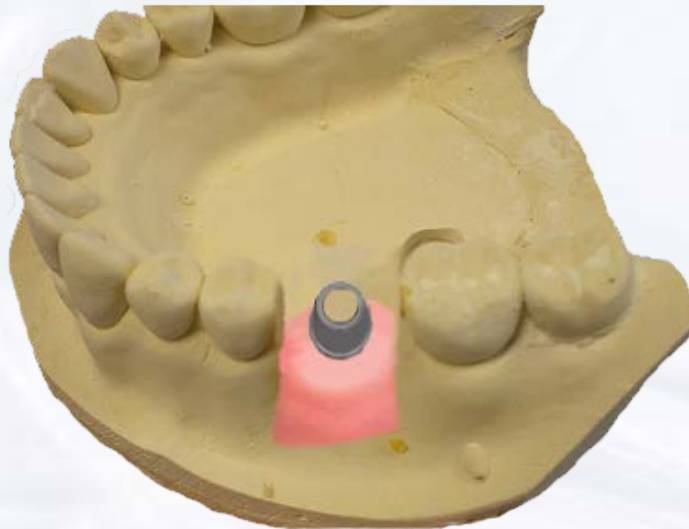
Cast and finish custom UCLA abutment



Blue Sky Bio

Internal Hex UCLA Screw Retained Crown

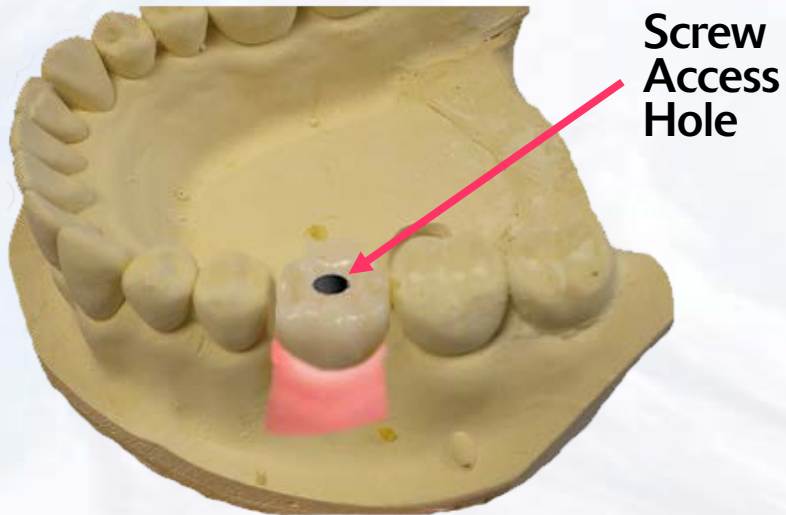
Seal the screw opening of the
UCLA Abutment



Blue Sky Bio

Internal Hex UCLA Screw Retained Crown

Stack and fire the
Ceramic in the usual
manner



Use the screw driver assembly
to insert the crown



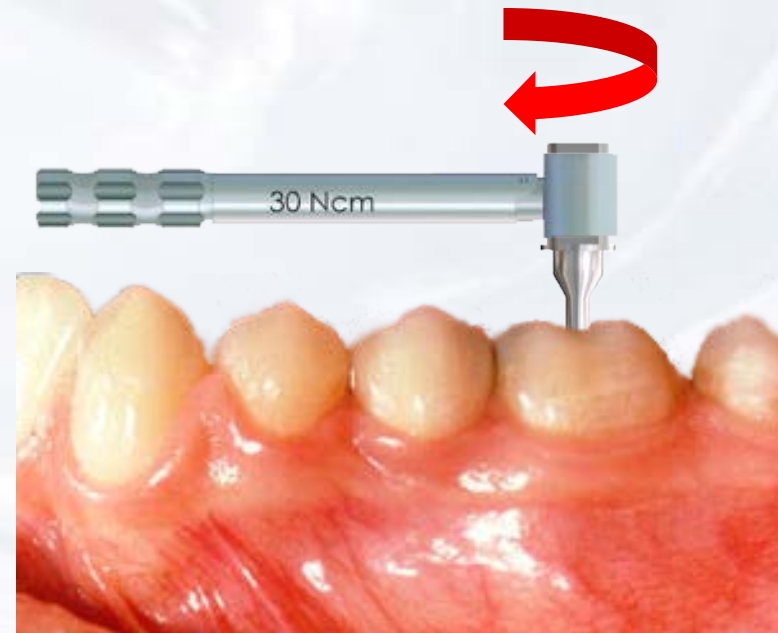
Blue Sky Bio

Internal Hex UCLA Screw Retained Crown

Insert the hex driver into the 30Ncm torque ratchet



Insert driver into the abutment screw and turn torque ratchet clockwise until torque of 30 Ncm is reached and the head of the ratchet releases



Blue Sky Bio